

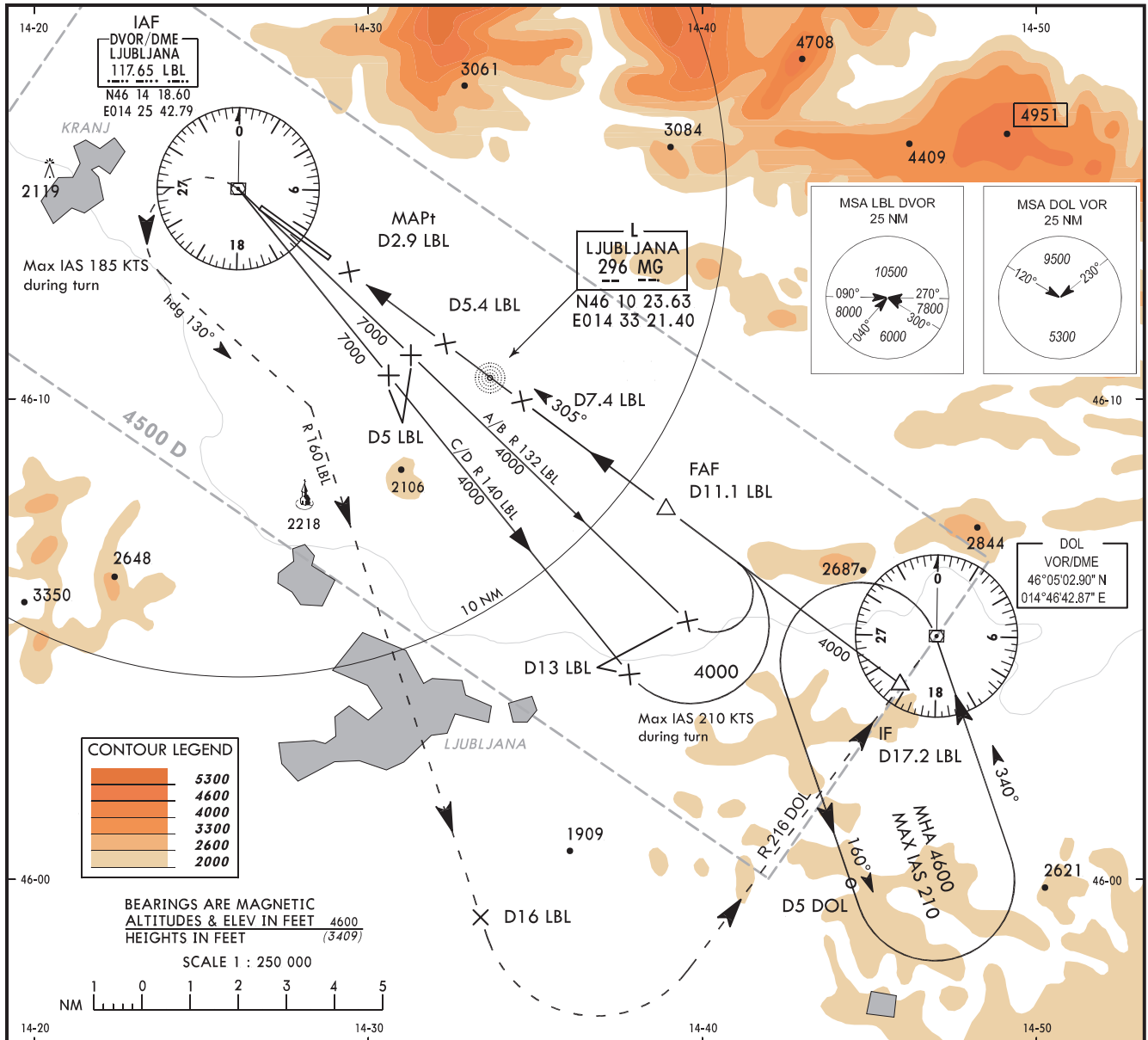
INSTRUMENT APPROACH CHART - ICAO

AD ELEV 1273 FT  
HEIGHTS RELATED TO THR RWY 31 ELEV 1191 FT

VAR 1.0° E

APP 135.275  
APP 136.000  
TOWER 118.000  
TOWER 118.750

LJUBLJANA, Ljubljana SLOVENIA  
VOR/DME RWY 31

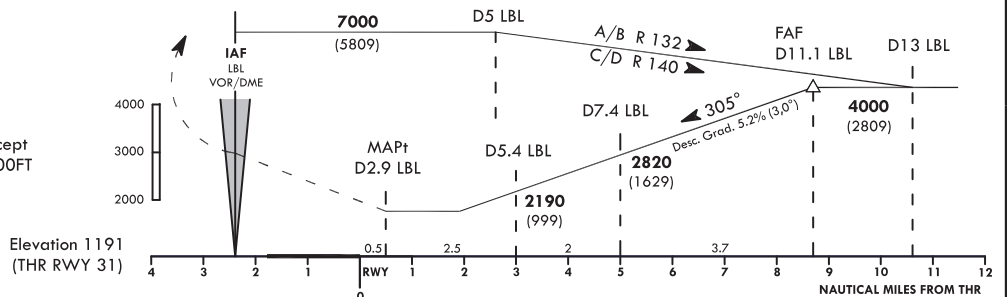


TA 10500

DUE TO HIGH TERRAIN NORTH OF AERODROME DO NOT OVERSHOOT R 125 LBL

MISSED APPROACH:

Climb STRAIGHT AHEAD, at LBL TURN LEFT (Max IAS 185 KT) heading 130°, intercept R 160 from LBL, at D16 LBL TURN LEFT, intercept R216 to DOL. Climb and maintain 6000FT



OCA(H)		A	B	C	D	RECOMENDED PROFILE		
Straight in approach	ALT	1620 (429)	1620 (429)	1760 (569)	1760 (569)	Gradient 5,2 %		
Circling	ALT	1790 (517)	1970 (697)	2040 *	2710 (1437)	Position	ALT	
				2610 (1337)		D10 LBL	3640	
* Alternate Circling minima for CAT C MAX IAS 160KTS : 2040 * (767)								
RATE OF DESCEND / ADVISORY INFORMATION ONLY								
GS (KT)	70	90	100	120	140	160	180	
FT/MIN	377	484	538	646	753	861	969	
Circling NE of aerodrome not authorized							D9 LBL	3320
							D8 LBL	3010
							D7 LBL	2690
							D6 LBL	2380
							D5 LBL	2060

AMENDMENT: New instrument approach